



FedWAN, Standard design.

L. Van Loo – N. Kharkevitch

Belnet

Connecting communities

.be

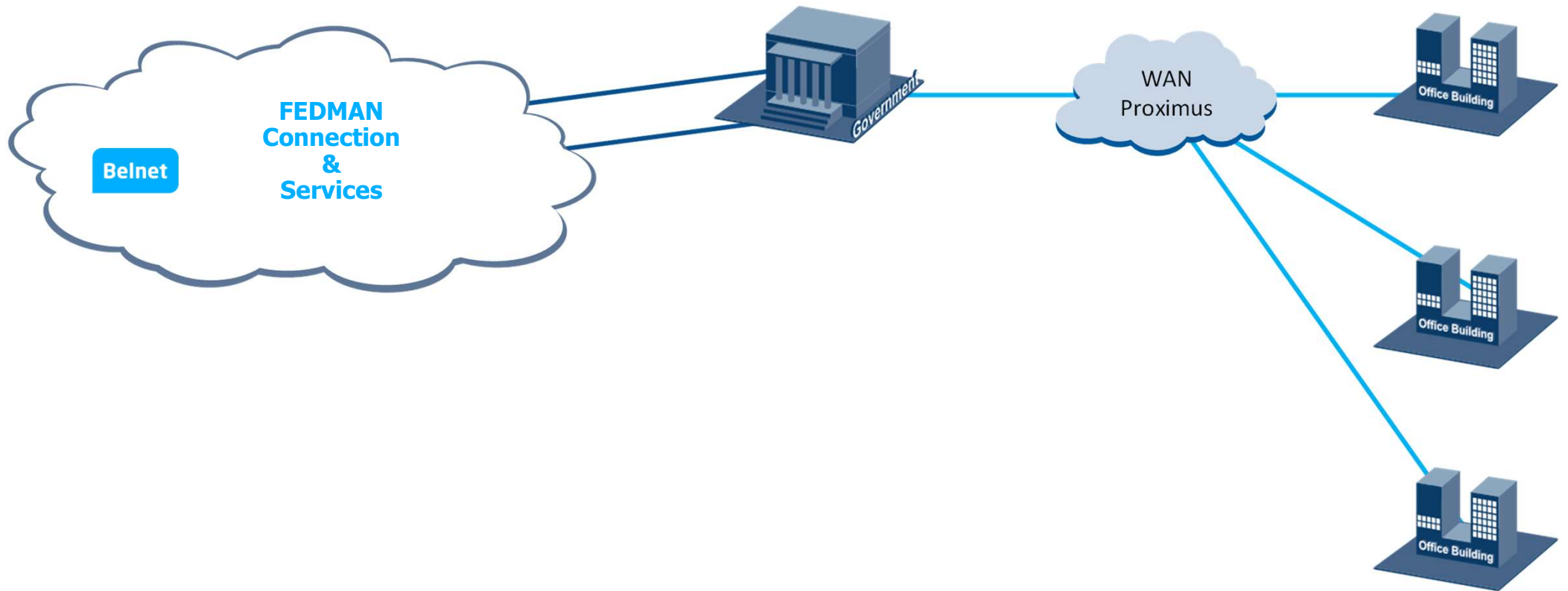
Before FEDWAN

There was
Proximus...

Belnet

Connecting communities

Once upon a time was Proximus WAN provider with his Explore services



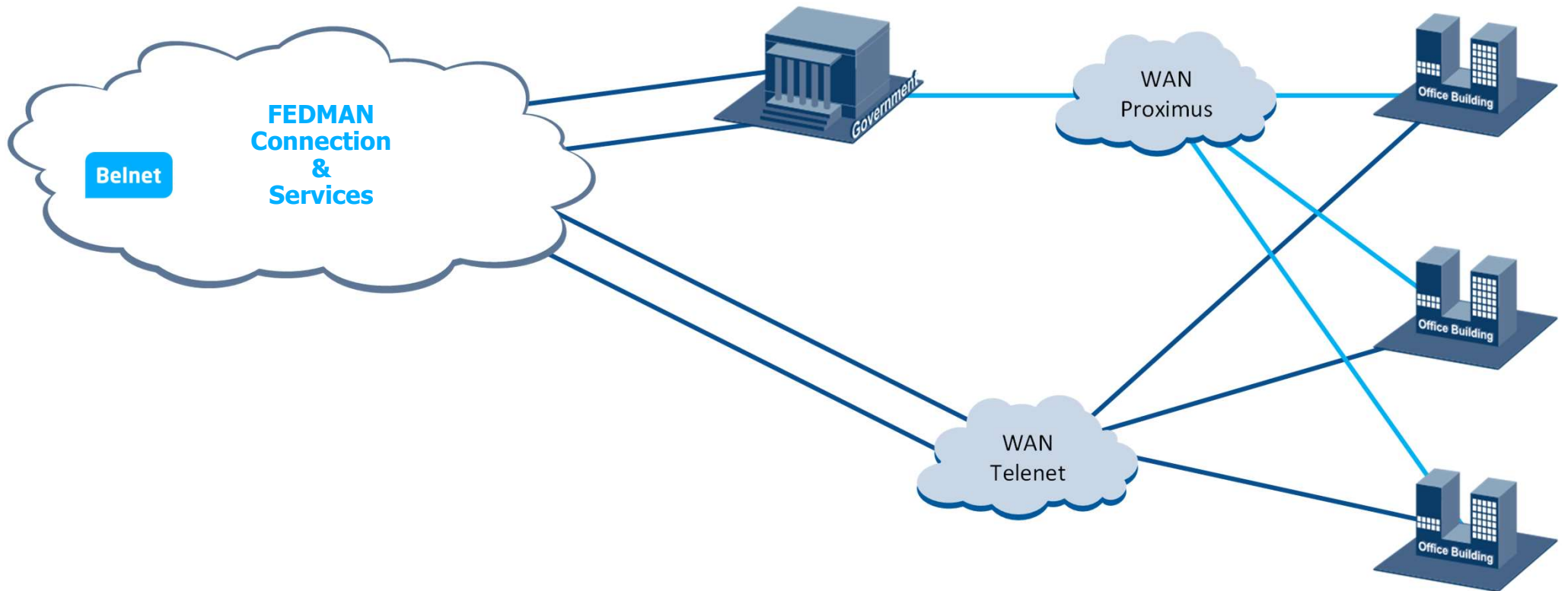
FEDWAN with Belnet

**Telenet enters the
dance...**

Belnet

Creation of the Telenet WAN interconnect

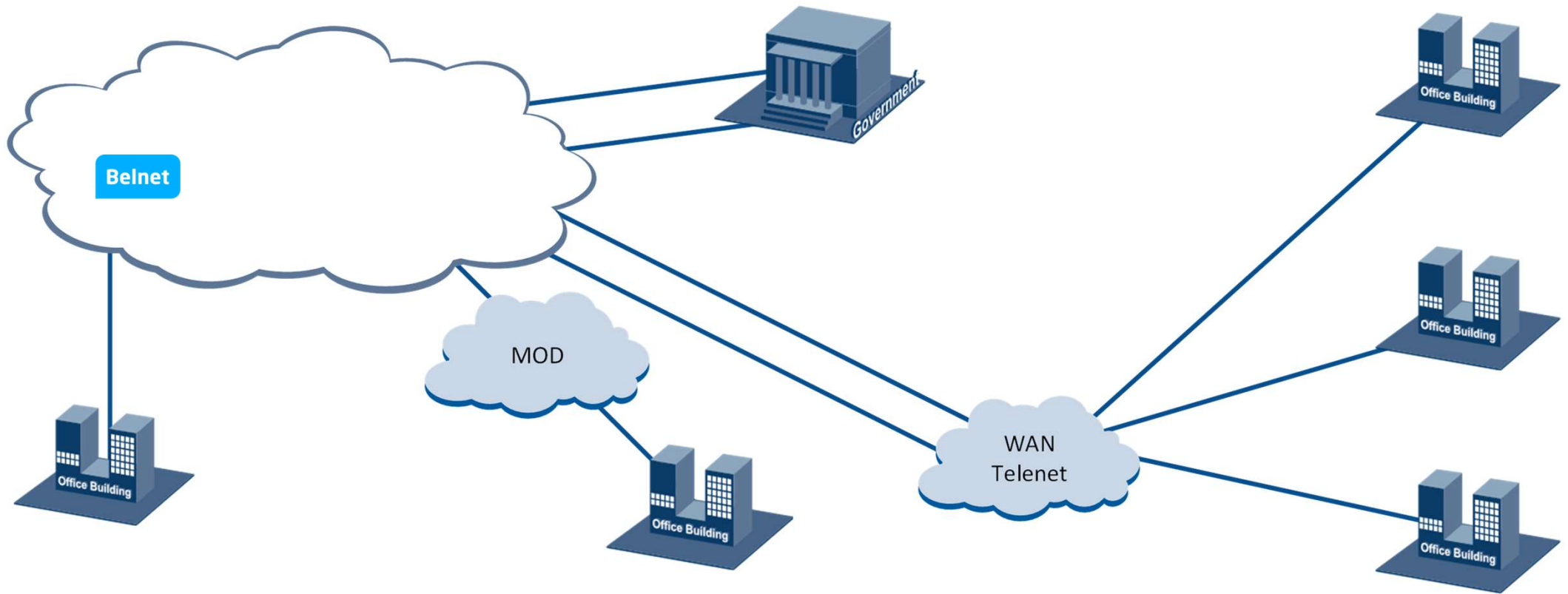
Connecting communities



Belnet

Connecting communities

After full migration



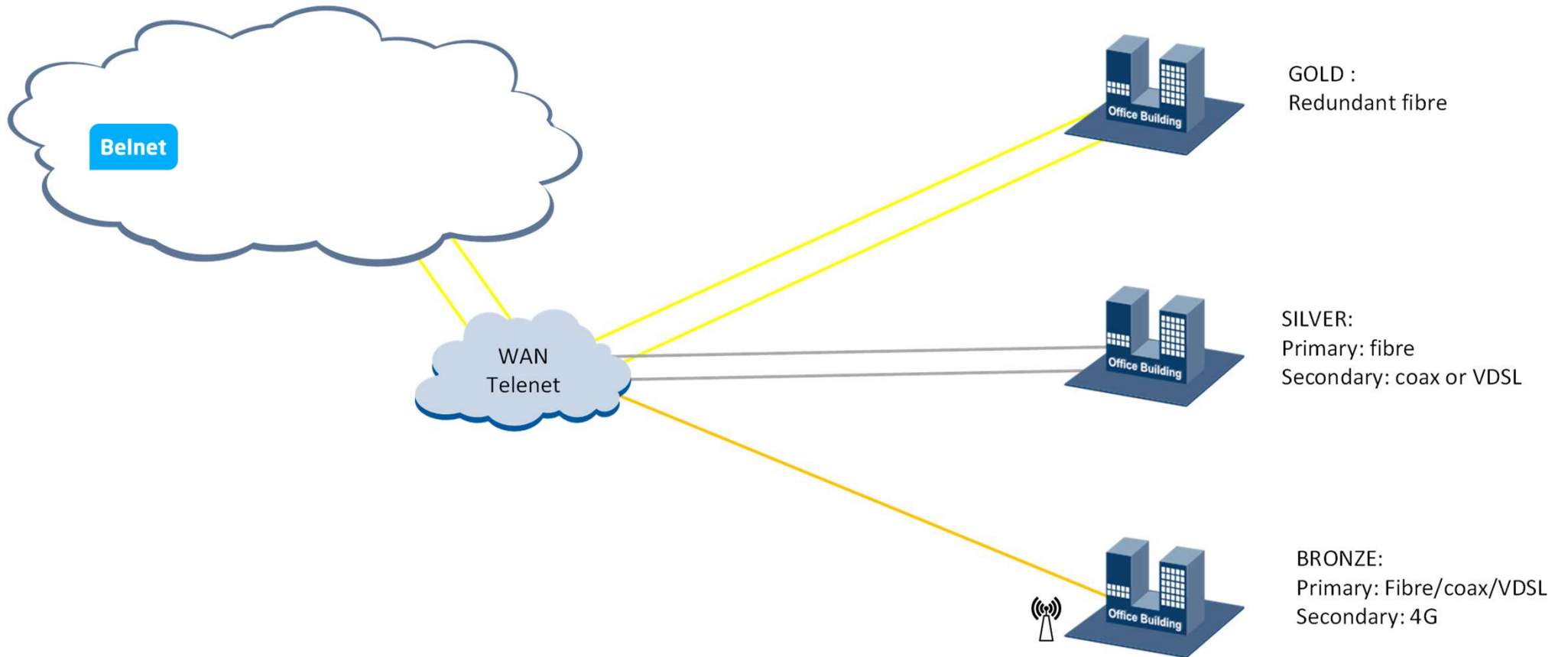
A few technical details

**The different
ways to connect.**

Belnet

Connecting communities

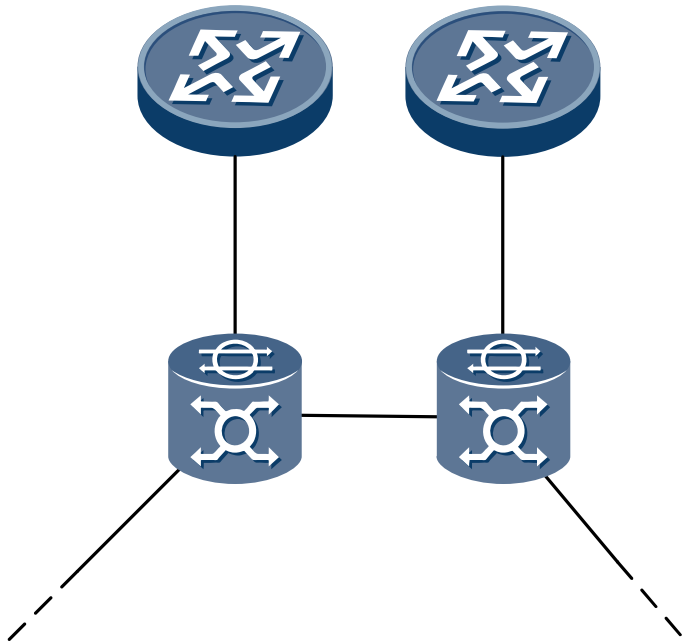
3 main flavors



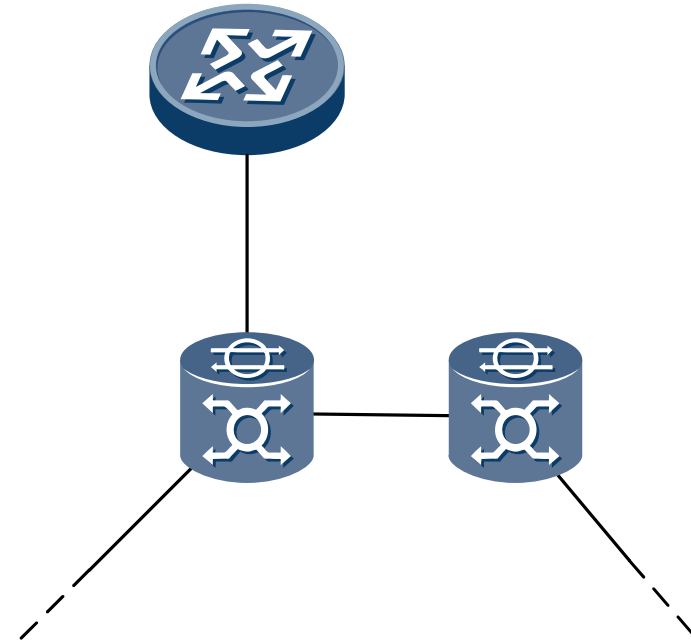
Belnet

Connecting communities

Gold connection & synergies sites



Dual fibre with separate paths

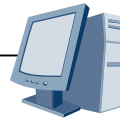
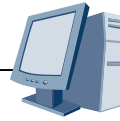


Redundancy with secondary fibre instead of 4G

**It's all about IP
addresses**

Belnet

Connecting communities



IP Plan - L2 - crucial information

Client side of CPE

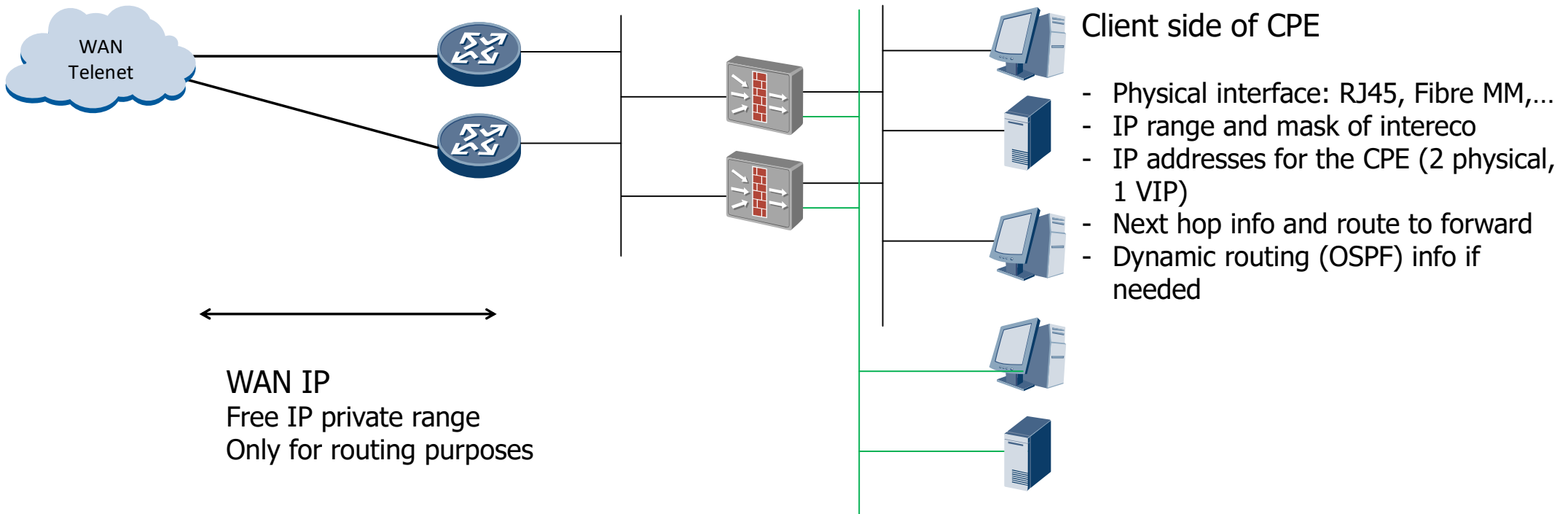
- Physical interface: RJ45, Fibre MM,...
- Untagged or VLAN(s)
- IP range(s) and mask(s)
- IP addresses for the CPE (2 physical, 1 VIP)
- DHCP information (if needed)

WAN IP
Free IP private range
Only for routing purposes

Belnet

Connecting communities

IP Plan - L3 - crucial information



IP Plan – crucial information

The image shows a screenshot of an Excel spreadsheet titled "IP PLAN OSPF TEMPLATE V05092024.xlsx". The spreadsheet has a menu bar with "File", "Home", "Insert", and "Pa". The active cell is B5. The spreadsheet content includes a header row with columns P, Q, R, and S. Below this, there are rows for "BELNET FILL", "ged (no VLAN)", and "IP LAN NETWORK", "IP LAN MASK", "CPE IP LAN VIP", and "CPE IP LAN PHYSICAL PRIMARY".

WE NEED YOU

IP LAN NETWORK	IP LAN MASK	CPE IP LAN VIP	CPE IP LAN PHYSICAL PRIMARY

Send all info to the Technical Advisor (Lisa & Nicolas) for a centralized information



Thank you.

Belnet

Connecting communities

.be